

PURUS
INDSTIK

PURUS



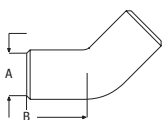
PURUS indstikssystem i PP-Plast.
Hvide eller forkromede
bøjninger, muffer & T-stykker

Et komplet program i indendørs afløbsprodukter.

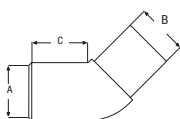
www.purus.dk

PURUS Vinkel 45° - indstik

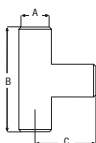
| WS nr. | EAN nr. | A (mm) | B (mm) | Farve |
|------------|---------------|--------|--------|------------------|
| 752011-032 | 7391543519047 | 32 | 42 | Hvid |
| 752011-033 | 7391543524362 | 32 | 42 | Metaliseret/krom |
| 752011-040 | 7391543519528 | 40 | 42 | Hvid |
| 752011-041 | 7391543524379 | 40 | 42 | Metaliseret/krom |

**PURUS** Vinkel 45° - indstik m/spidsende

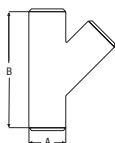
| WS nr. | EAN nr. | A | B | C(mm) | Farve |
|------------|---------------|----|----|-------|------------------|
| 752011-132 | 7391543519634 | 32 | 32 | 45 | Hvid |
| 752011-133 | 7391543524386 | 32 | 32 | 45 | Metaliseret/krom |
| 752011-140 | 7391543519481 | 40 | 40 | 45 | Hvid |
| 752011-141 | 7391543524393 | 40 | 40 | 45 | Metaliseret/krom |

**PURUS** Grenrør 90° - indstik

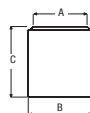
| WS nr. | EAN nr. | A | B | C(mm) | Farve |
|------------|---------------|----|-----|-------|------------------|
| 752001-032 | 7391543519054 | 32 | 118 | 59 | Hvid |
| 752001-033 | 7391543524447 | 32 | 118 | 59 | Metaliseret/krom |
| 752001-040 | 7391543519535 | 40 | 118 | 59 | Hvid |
| 752001-041 | 7391543524454 | 40 | 118 | 59 | Metaliseret/krom |

**PURUS** Grenrør 45° - indstik

| WS nr. | EAN nr. | A (mm) | B (mm) | Farve |
|------------|---------------|--------|--------|------------------|
| 752003-032 | 7391543519542 | 32 | 140 | Hvid |
| 752003-033 | 7391543524461 | 32 | 140 | Metaliseret/krom |
| 752003-040 | 7391543519498 | 40 | 140 | Hvid |
| 752003-041 | 7391543524478 | 40 | 140 | Metaliseret/krom |

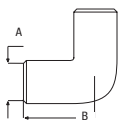
**PURUS** reduktion 40/32 - indstik

| WS nr. | EAN nr. | A (mm) | B (mm) | Farve |
|------------|---------------|--------|--------|-------|
| 752021-040 | 7391543519108 | 32 | 40 | Hvid |

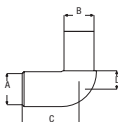


PURUS Vinkel 90° - indstik

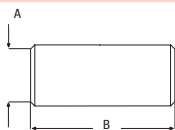
| WVS nr. | EAN nr. | A (mm) | B (mm) | Farve |
|------------|---------------|--------|--------|-------------------|
| 752014-032 | 7391543519030 | 32 | 61 | Hvid |
| 752014-033 | 7391543524409 | 32 | 61 | Metalliseret/krom |
| 752014-040 | 7391543519511 | 40 | 64 | Hvid |
| 752014-041 | 7391543524416 | 40 | 64 | Metalliseret/krom |

**PURUS** Vinkel 90° - indstik

| WVS nr. | EAN nr. | A | B | C | D | Farve |
|------------|---------------|----|----|----|----|-------------------|
| 752014-132 | 7391543519115 | 32 | 32 | 61 | 20 | Hvid |
| 752014-133 | 7391543524423 | 32 | 32 | 61 | 20 | Metalliseret/krom |
| 752014-140 | 7391543519641 | 40 | 40 | 61 | 26 | Hvid |
| 752014-141 | 7391543524416 | 40 | 40 | 61 | 26 | Metalliseret/krom |

**PURUS** Muffe - indstik

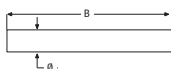
| WVS nr. | EAN nr. | A (mm) | B (mm) | Farve |
|------------|---------------|--------|--------|-------------------|
| 752025-032 | 7391543519023 | 32 | 84 | Hvid |
| 752025-033 | 7391543524485 | 32 | 84 | Metalliseret/krom |
| 752025-040 | 7391543519504 | 40 | 85 | Hvid |
| 752025-041 | 7391543524492 | 40 | 85 | Metalliseret/krom |

**PURUS** PP-rør til indstik

| WVS nr. | EAN nr. | Ø (mm) | B (mm) | Farve |
|------------|---------------|--------|--------|-------|
| 750165-010 | 7391543515483 | 32 | 1000 | Hvid |
| 750167-010 | 7391543515490 | 32 | 2000 | Hvid |
| 750165-011 | 7391543515506 | 40 | 1000 | Hvid |
| 750167-011 | 7391543515513 | 40 | 2000 | Hvid |

PURUS ABS-rør til indstik

| WVS nr. | EAN nr. | Ø (mm) | B (mm) | Farve |
|------------|---------------|--------|--------|-------------------|
| 750155-110 | 7391543524607 | 32 | 1000 | Metalliseret/krom |
| 750155-111 | 7391543524621 | 40 | 1000 | Metalliseret/krom |



PURUS Afløbsrør - vinklet

| WVS nr. | EAN nr. | Ø (mm) | Mål (mm) | Farve |
|------------|---------------|--------|-----------|------------------|
| 750251-010 | 7391543514776 | 32 | 160 x 600 | Hvid |
| 750251-011 | 7391543514813 | 40 | 160 x 600 | Hvid |
| 750251-110 | 7391543514868 | 32 | 160 x 600 | Metaliseret/krom |
| 750251-111 | 7391543514882 | 40 | 160 x 600 | Metaliseret/krom |
| 750257-010 | 7391543514783 | 32 | 180 x 700 | Hvid |
| 750254-010 | 7391543521156 | 32 | 220 x 680 | Hvid |
| 750254-011 | 7391543521163 | 40 | 220 x 680 | Hvid |
| 750233-010 | 7391543521187 | 32 | 220 x 680 | Forkromet |
| 750258-010 | 7391543514806 | 32 | 300 x 900 | Hvid |
| 750259-111 | 7391543514899 | 40 | 350 x 650 | Forkromet |
| 750259-011 | 7391543514820 | 40 | 350 x 650 | Hvid |



PURUS Afløbsrør med S-bøjning

| WVS nr. | EAN nr. | Ø (mm) | Mål (mm) | Farve |
|------------|---------------|--------|--------------|------------------|
| 750260-011 | 7391543506702 | 40 | 600 x 50/160 | Hvid |
| 750260-111 | | 40 | 600 x 50/160 | Metaliseret/krom |



PURUS Pungvandlås

| WVS nr. | EAN nr. | Ø (mm) | A (mm) | Farve |
|------------|---------------|--------|-----------|------------------|
| 750411-052 | 7391543500434 | 40 | 1¼" | Hvid |
| 750411-010 | 7391543500465 | 32 | 1¼" | Hvid |
| 750411-050 | 7391543524744 | 32 | 1¼" | Metaliseret/Krom |
| 750411-051 | 7391543500526 | 40 | 1¼" | Metaliseret/krom |
| 738820-040 | 7391543524874 | 32/40 | 1¼" / 1½" | Hvid m/PUM |



PURUS Pungvandlås til indstik

| WVS nr. | EAN nr. | Ø (mm) | A (mm) | E (mm) | F (mm) | Farve |
|------------|---------------|--------|--------|--------|--------|-------|
| 750411-040 | 7391543519580 | 40 | 1¼" | 45-100 | 80 | Hvid |

PURUS Vandlås - lige (eksklusiv rør)

| WVS nr. | EAN nr. | Ø (mm) | A (mm) | H (mm) | Farve |
|------------|---------------|--------|--------|--------|-------|
| 750416-010 | 7391543500403 | 32 | 1¼" | 140 | Hvid |
| 750416-052 | 7391543500397 | 40 | 1¼" | 140 | Hvid |



Tegning 2



Tegning 1